

Public urinals





LAUFEN urinals for “public” sector can be seen in a wide variety of public places. Whether it be in the catering sector (restaurants, bars and hotels), busy transport nodes such as stations and airports, the business sector, municipal buildings such as schools and congress centres, or shopping centres, cinemas, theatres or concert halls – the scope of applications for these urinals, most of which are equipped with electronic flushing, is practically unlimited.



antero



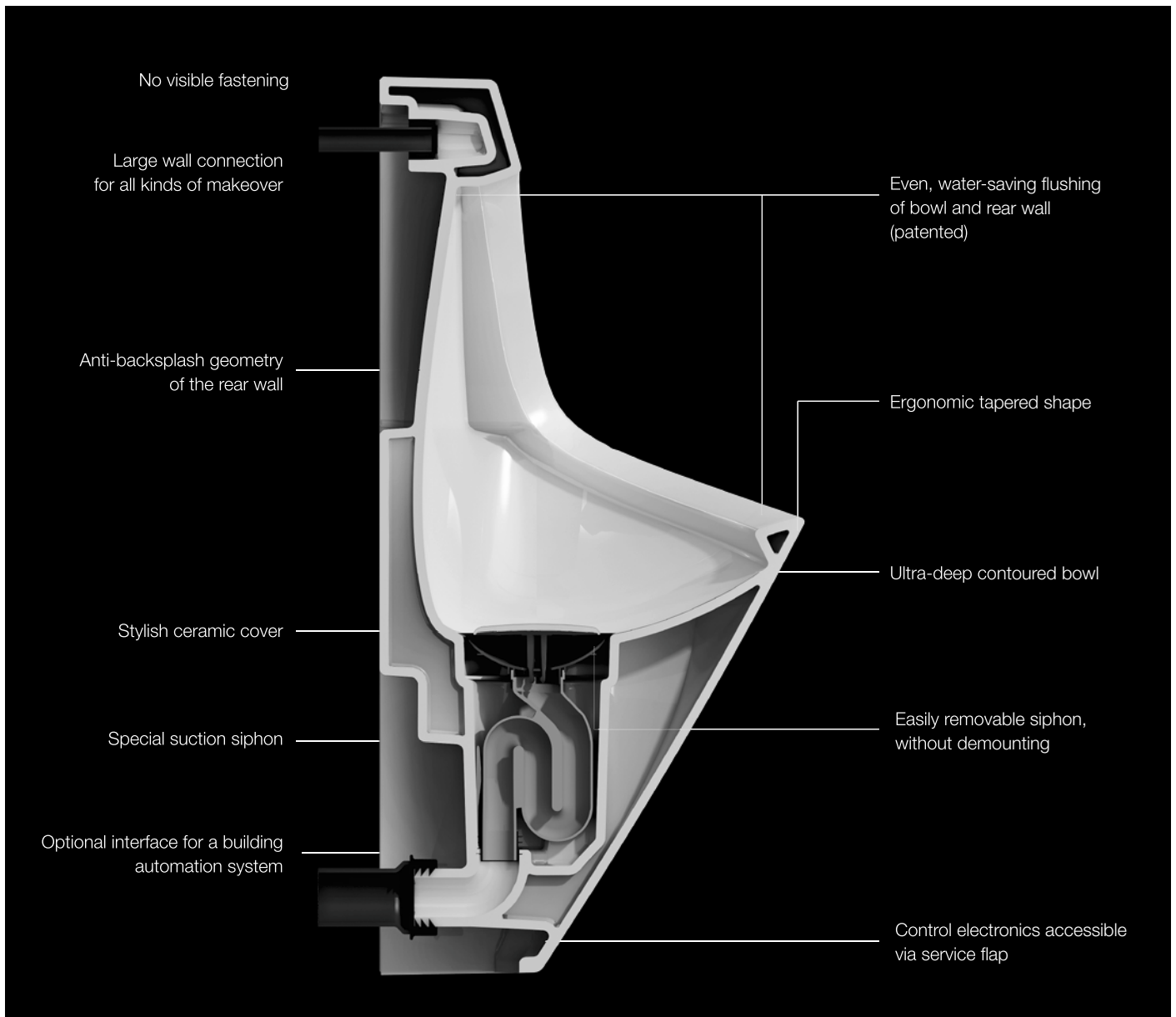
Eco-friendly urinal for prestigious washroom facilities: With its antero urinal designed LAUFEN offers outstanding design and meticulous well-conceived functions to create prestigious washroom facilities for guests, customers and staff. This masterly combination in the product design of the two qualities, form and function, the urinal has already earned the Red Dot Award 2012. The outstanding design has been developed by Toan Nguyen.



reddot design award
winner 2012



German
Design Award
SPECIAL
MENTION 2014



LAUFEN urinals are set to revolutionise the upkeep and maintenance of public sanitary facilities. Up till now, urinals often had to be completely disassembled when replacing their siphons. antero and lema allow you to release the siphon easily using a special key and lift it out.

The siphon on antero und lema urinals can be changed easily, quickly and economically:

1. Remove ceramic cover by hand.
2. Lift siphon up and out using special key.
3. Clean urinal and rinse pipes.
4. Insert the new siphon.
5. Place ceramic cover.



antero & lema control system

antero and lema urinals offer everything required by operators of public toilets: A thorough et water-saving flush, easy cleaning and maintenance and demand-oriented control electronics.

The intelligent control system has different modes and can trigger cleaning after each user or at defined intervals with different flush quantities of between 0.5 and 3 litres. Following long periods of non-use, a hygiene flush takes place every 24 hours by default. An integrated overflow protection provides additional safety in the event of the outlet being clogged.



Stadium mode

If usage frequency is high, the system automatically switches to stadium mode, which causes flushing to take place independently of usage. The system then triggers a flush at a programmable interval. If the system detects no usage within a flushing interval, it automatically switches back to normal mode.



Hybrid mode

The urinal flushes at a predefined interval if usage is detected, and not after every single use. The flushing interval can be set to six different values between 1 h and 12 h. A predefined flushing volume is assigned to each flushing interval.

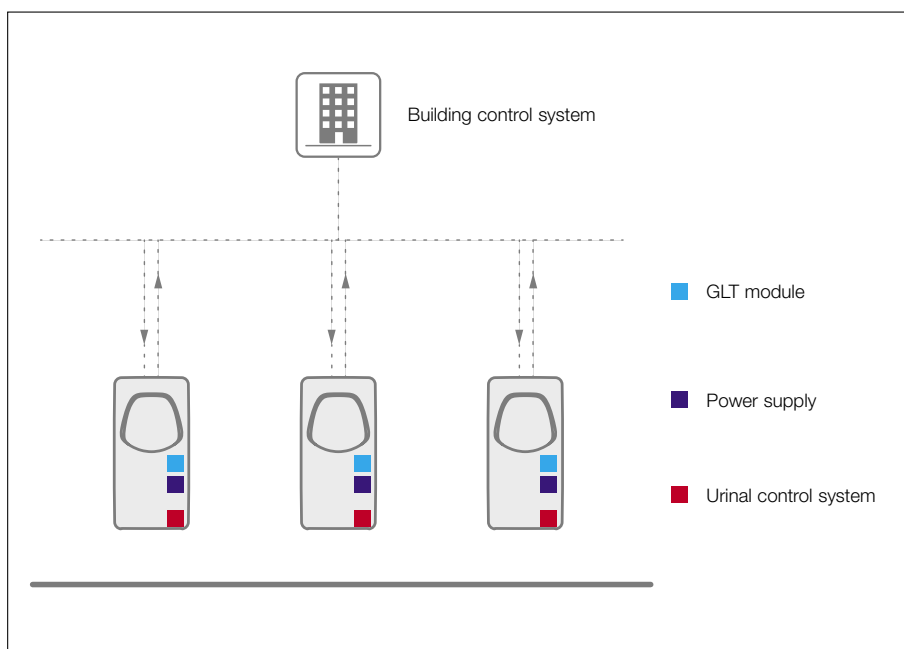
USB module

In addition to user-friendly operation via a control panel, settings can be changed conveniently on a laptop using a USB connection. The clear interface of the control software also allows status functions and statistics to be queried.



GLT module

With the help of an additional module, the LAUFEN control system has an interface to popular building control systems. This allows central flushing to be triggered and stopped, the flush quantity to be changed, and status queries to be made.





Public urinals



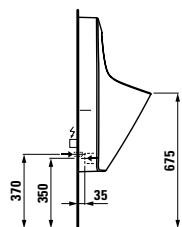
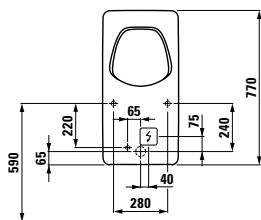
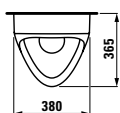
84015.3
antero, siphonic urinal, internal water inlet

84015.0
antero, siphonic urinal, internal water inlet, with electronic control system, battery operated

84015.2
antero, siphonic urinal, internal water inlet, with electronic control system, mains operated 230V

84015.4
antero, siphonic urinal, internal water inlet, with electronic control system, mains operated 230V, concealed power supply

89013.0
Optional USB adapter module for antero urinal with electronic control 84015.0, 84015.2 and 84015.4



Available with/without fly

84015.5
antero, siphonic urinal, internal water inlet, with electronic control system, mains operated 230V, with GLT-module

84015.6
antero, siphonic urinal, internal water inlet, with electronic control system, mains operated 230V, concealed power supply, with GLT-module



84019.7
lema, siphonic urinal, internal water inlet

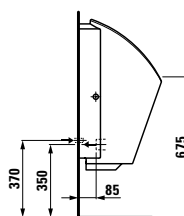
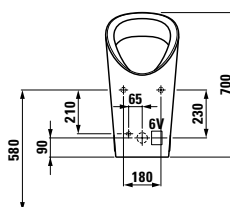
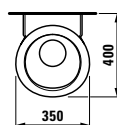
84019.4
lema, siphonic urinal, internal water inlet, with electronic control system, battery operated

84019.6
lema, siphonic urinal, internal water inlet, with electronic control system, mains operated 230V

84019.8
lema, siphonic urinal, internal water inlet, with electronic control system, concealed power supply

89013.0
Optional USB adapter module for lema urinal with electronic control 84019.4, 84019.6 and 84019.8

89013.1
Optional GLT adapter module for lema urinal with electronic control 84019.4, 84019.6 and 84019.8

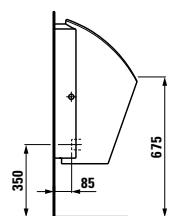
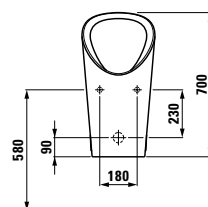
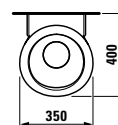


Available with/without fly



84319.5
Lema, waterless urinal

The innovative Lema 0-litre urinal operates without water and does not require a water shut-off device or electricity to keep the drain closed. The urine itself helps to keep gases sealed in and to prevent their escape. The principle behind this "trap" is known in the chemical industry as the Erlenmeyer flask.



Available with/without fly

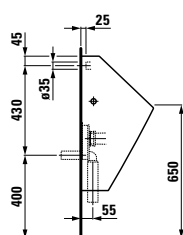
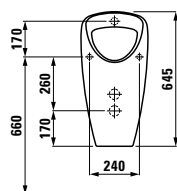
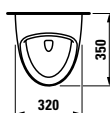
Public urinals



84206.1
caprino plus, siphonic urinal, internal water inlet

84206.5
caprino plus, siphonic urinal, internal water inlet, with electronic control system, mains operated 230V, vandal-proof

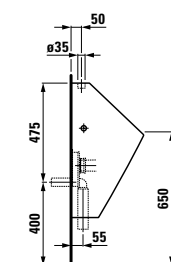
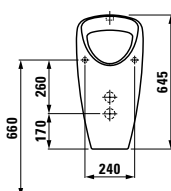
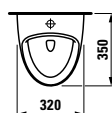
84206.6
caprino plus, siphonic urinal, internal water inlet, with electronic control system, battery operated, vandal-proof



Available with/without fly



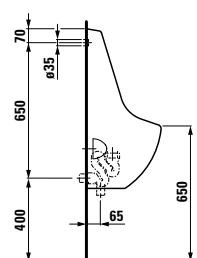
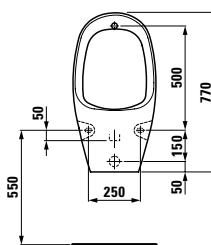
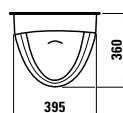
84206.2
caprino plus, siphonic urinal, external water inlet



Available with/without fly



84009.0
tamaro, siphonic urinal, internal water inlet



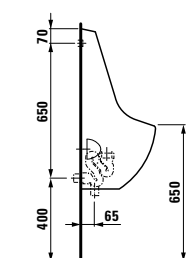
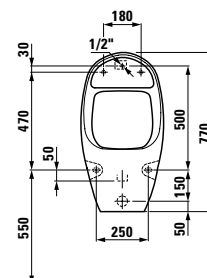
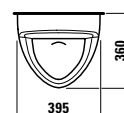
Available with/without fly



84010.4
tamaro-S90, siphonic urinal, internal water inlet, with electronic control system, battery operated

84010.3
tamaro-S90, siphonic urinal, internal water inlet, with electronic control system, mains operated 230V

84010.5
tamaro-S90, siphonic urinal, internal water inlet, with electronic control system, mains operated 230V, concealed power supply



Available with/without fly

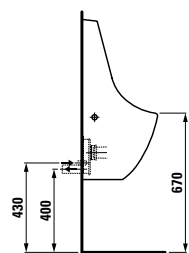
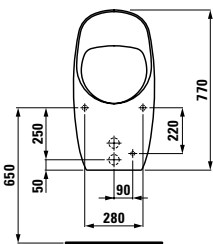
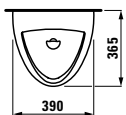
Public urinals



84112.1
tamaro-VS, siphonic urinal, internal water inlet, vandal-proof

84112.2
tamaro-VS, siphonic urinal, internal water inlet, with electronic control system, mains operated 230V, vandal-proof

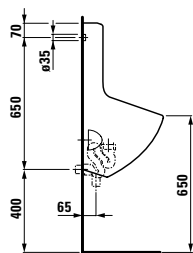
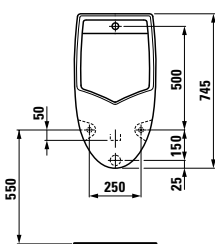
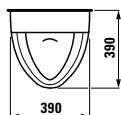
84112.3
tamaro-VS, siphonic urinal, internal water inlet, with electronic control system, battery operated



Available with/without fly



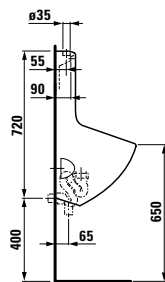
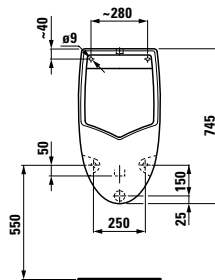
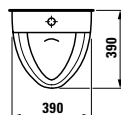
84000.0
taro-nova, siphonic urinal, internal water inlet



Available with/without fly



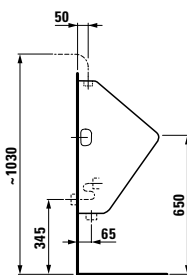
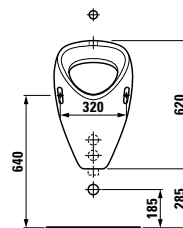
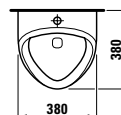
84000.5
taro-uni, siphonic urinal, external water inlet



Available with/without fly



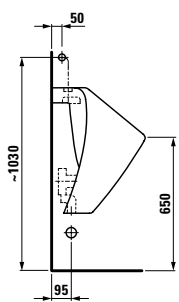
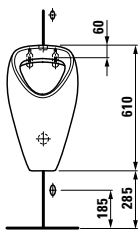
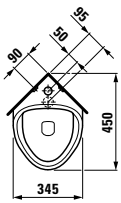
84005.0
kaprun, siphonic urinal, external water inlet



Public urinals



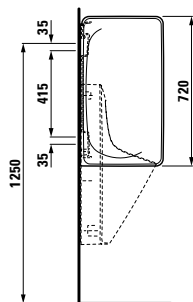
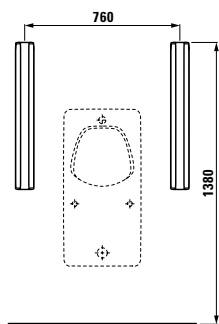
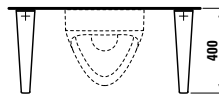
84412.0
como, siphonic urinal, external water inlet



Available with/without fly



84760.3
cinto, urinal division



84760.0
rion, urinal division

